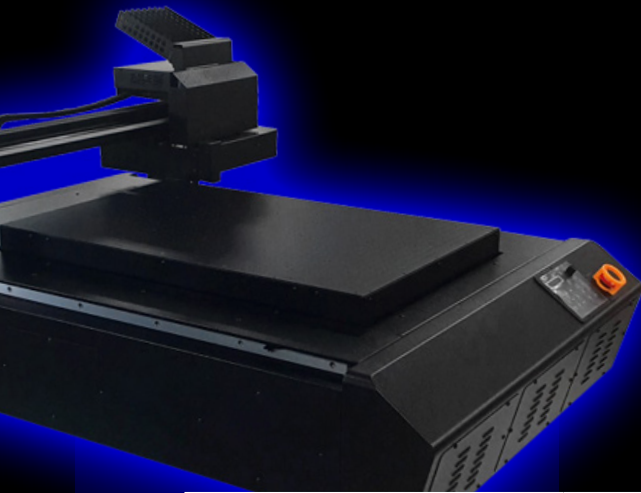


Experience **Axzyra**<sup>®</sup>  
Print done differently.



# APACHE<sup>®</sup> TH6090Geni

**Ink Drop & Print Head configuration:** 2 x Ricoh TH5241

**Curing:** 2 x Air Cooled UV LEDs:

2 x full UV LEDs (70mm length) n/c option varnish lamp

**Max. Print Area mm:** 600mm x 900mm

**THE APACHE<sup>®</sup> TH6090Geni is perfect for:**

- Spot varnishing on books
- Larger volumes of small items in colour / white
- Direct print to canvas & slate

<b>SPECIFICATIONS 2021</b>	<b>TH6090Geni</b>
<b>Print Head Technology</b>	<b>2 x Ricoh TH5241</b>
<b>Ink Drop &amp; Print Head configuration</b>	2.5, 5, 7.5 (pl) (Total 8 channels Colour & White / varnish stagger head config)
<b>Curing</b>	2 x Air Cooled UV LED: Two full UV LED (70mm length) n/c option varnish lamp
<b>Max. Print Area mm</b>	<b>600mm x 900mm</b>
<b>Max. Substrate Height (mm)</b>	<b>150mm</b> head clearance
<b>Bed Type</b>	Teflon Coated Vacuum table <b>(2 zone)</b>
<b>Inks</b>	<b>200ml Foil pouch</b> UV ink types. Soft, hard and Hybrid.
<b>Resolution</b>	8 Pass, Bi-direction, 720 x 1200 dpi
<b>Speed</b>	<b>5.1m/hr</b>
<b>Optional fixtures</b>	<b>1600 x 1410 x 1350mm</b> inc. Latent UV varnishing lamp (W x L x H)
<b>Dimensions</b>	<b>1600 x 1410 x 1350mm</b> (inc. stand) (X x Y x Z)
<b>Unit weight</b>	160kg

## DESCRIPTION

The Apache<sup>®</sup> 6090 Geni, our fastest small format UV LED printer, the perfect choice for personalised printing on wood, acrylic among many other substrates including anodised aluminium and glass.

High resolution high speed full colour printing allows you to print company logos and small text on promotional items. Customised printing on watch dials, instrument panels etc.



Our full line-up of Apache<sup>®</sup> flatbed printers are using the latest inkjet and curing technology.

Our experts provide full training, guidance and support. Amazing versatility, with incredible spot varnish, fluorescent inks, and embossing effects. Intelligent RIP software, handling complex effects or simple job manipulation. Real time printing info, such as ink usage, print speed and timing. Suitable for a wide range of applications, printing onto a vast array of materials and surfaces.

Please follow us:  Axzyra  @axzyra  @axzyra